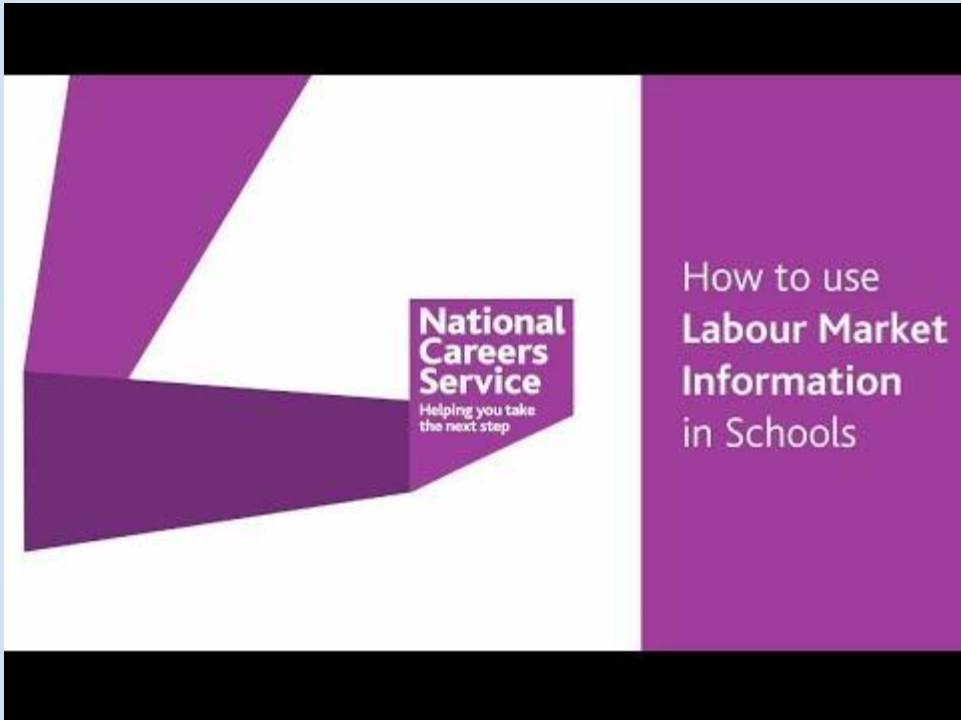


# Labour Market Information



Co-op Academy  
North Manchester

# What is LMI?



LMI describes the world of work. This includes:-

- Descriptions of different careers - entry routes, how many people work in the industry, salaries paid, jobs located around the country, skills and qualifications needed
- Future demand – what kinds of jobs will be in demand after leaving school and what kinds of skills will be needed?

# Labour Market Information



What 10 jobs were  
not around 10  
years ago?

# 10 YEARS AGO THESE JOBS DIDN'T EXIST

Digital Marketing Specialist

Social Media Manager

Blogger

Uber Driver

Telemedicine Physician

Driverless Car Engineer

Fracking Consultant

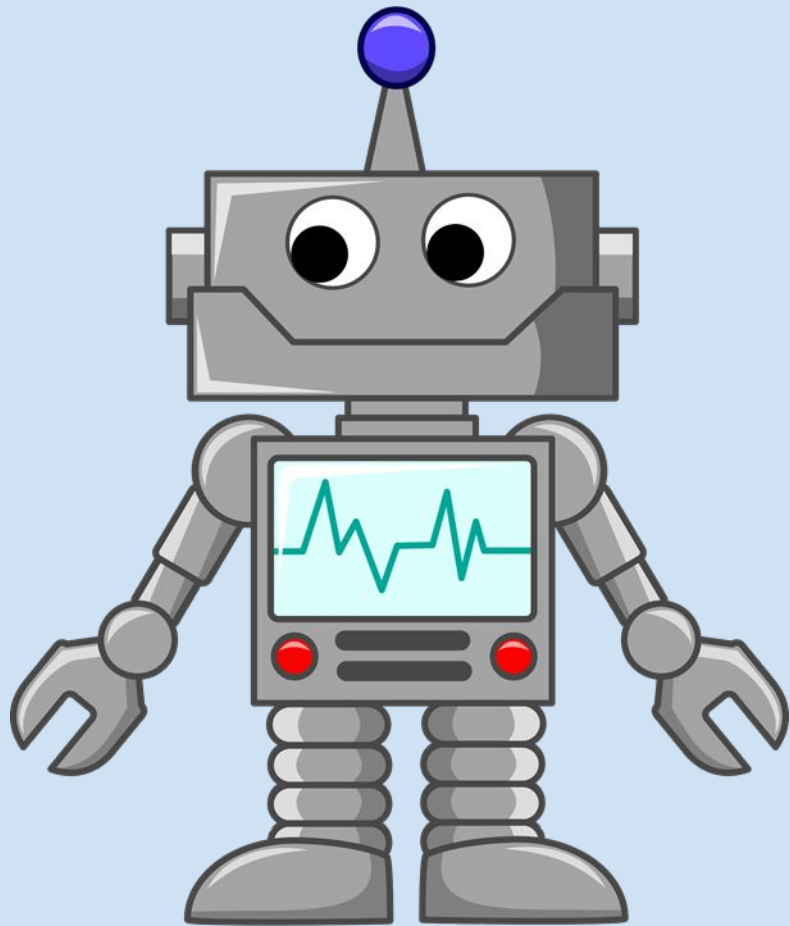
Sustainability Engineer

Cloud Computing  
Professionals

App Developer

Vlogger

# HOW WILL TECHNOLOGY CHANGE THE WORKING WORLD?

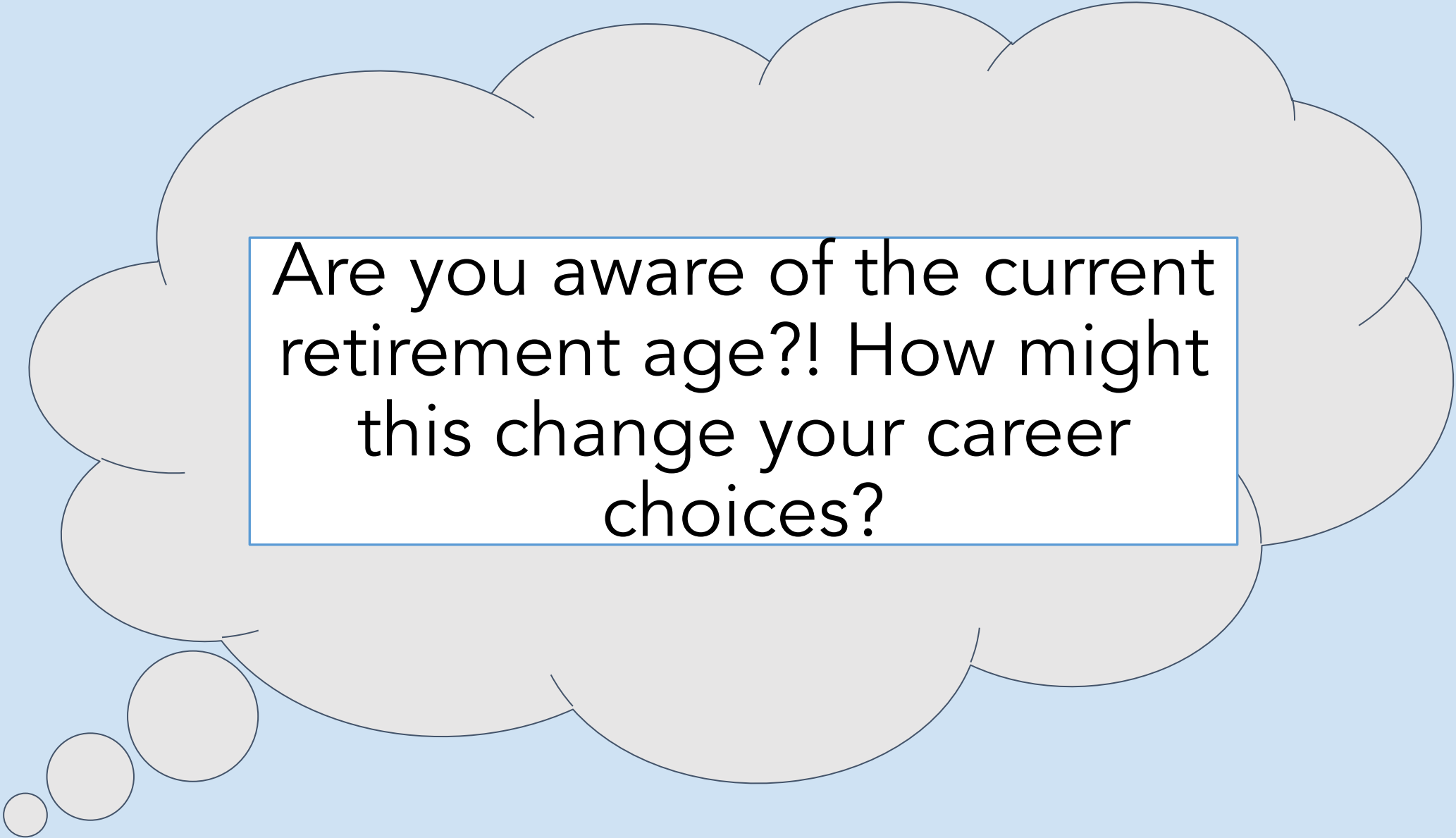


2 of 3 primary school children will do a job that doesn't exist yet!

Technological Advancement is meaning that many jobs are disappearing

## Jobs Disappearing





Are you aware of the current retirement age?! How might this change your career choices?

# WHAT CHALLENGES WILL YOU FACE?

- IT WILL BE HARDER/DIFFERENT
- MORE PEOPLE ARE NOW SELF EMPLOYED
- MORE PEOPLE WORK MULTIPLE PART TIME JOBS
- MORE PEOPLE NOW HAVE SHORT TERM OR ZERO HOUR CONTRACTS

- YOU WILL NEED TO CONCENTRATE ON TRANSFERABLE SKILLS
  - COMMUNICATION
  - COMPUTING
  - NUMERACY
  - TEAM WORKING
  - ADAPTABILITY
  - PROBLEM SOLVING

# Manchester labour market information

<https://www.nomisweb.co.uk/reports/Imp/la/1946157083/report.aspx>



## What do we know about Manchester?

- Manchester is a leading European business destination and the most successful city for attracting foreign direct investment outside London
- Manchester outperforms all other major UK cities in the fields of AI and data, advanced materials, cyber, construction tech, eCommerce, IoT, MedTech and service design
- There are more than 2,000 foreign owned companies and leading brands such as Google, Amazon, Kellogg's, Jaguar Land Rover and BNY Mellon have chosen to make Manchester their home.

<https://www.youtube.com/watch?v=fuTIDc5ug-Y>

## What do we know about Manchester?

### Manchester has industry expertise in:

- **Advanced manufacturing**
  - From research and development, architectural services and civil construction; to assembly, distribution and technical consultancy; our companies are well-established across the whole business life cycle ie Jaguar Land Rover, BAE Systems, Balfour Beatty, Heinz, Hitachi, Siemens
- **Creative & media**
  - Home to Europe's largest purpose-built digital hub, MediaCityUK, and with a heritage of broadcast and media production, marketing and advertising as well as specialist skills in service design, animation, gaming, augmented and virtual realities ie BBC, Brown Bag Films, Mediacom and Dentsu Aegis
- **Digital & technology**
  - As well as being home to a fast-growing £5 billion digital ecosystem, Manchester is officially the UK's Top Digital Tech City, with ambitions to become a top five European digital city and global influencer i.e Google, Microsoft, IBM and Cisco

## What do we know about Manchester?

### Manchester has industry expertise in:

- **Financial & professional services**

- Manchester is home to the largest regional financial, professional and business services (FPBS) industry outside of London, employing more than 280,000 people. It is the only UK city outside of the capital with all elements of the sub-sectors represented at scale – from banking, financial services and FinTech to insurance, accounting and legal i.e Barclays, BNY Mellon, AXA, Latham & Watkins

- **Life science & healthcare**

- A city of firsts, Manchester introduced In Vitro Fertilisation (IVF) treatment to the world enabling the birth of over 8 million babies and pioneered the first total hip replacement surgery and bionic eye implants. It is the first UK city to have devolved control of its £6 billion health and social care budget. Key businesses include Qiagen Kratos Analytical, Hologic, Abbott Rapid Diagnostics

- **Low carbon**

- Home to the largest low carbon sector in the UK outside London and the South East, Manchester is well placed to access the £3.4 trillion global low carbon market and has particular expertise in several key areas including nuclear, power transmission & distribution, Smart Grids and District Heat Networks

# Labour Market Information



Co-op Academy  
North Manchester